



Bathing establishment Fact Sheet

| | |
|----------------|-------------------------|
| Bathhouse name | Paperino |
| Address | Lungomare Leopoldo 61 |
| City | Marina di Grosseto (GR) |
| Contacts | Tel. +39 0564383389 |
| Website | Not detected |

TESTED BY: [Handy Superabile - Social Promotion Association](#) in summer 2023

Please note The following information refers to the verification date shown at the bottom of each card. **The Association** is not responsible for any significant changes made by the property after the visit.

Summary

| | |
|--|----|
| Bathing establishment Fact Sheet | 1 |
| Arrival at the facility | 2 |
| Private/public parking..... | 2 |
| Pathway from the parking lot to the main entrance | 2 |
| Reception..... | 3 |
| Bar/restaurant | 3 |
| Internal Pathways and common services..... | 4 |
| Internal Pathways | 4 |
| Toilet and shower accessible to guests with reduced mobility | 5 |
| Changing room | 7 |
| Beach..... | 8 |
| Children's play area | 9 |
| Swimming pool | 9 |
| Doctors' Offices/Healthcare Facilities | 10 |

Project carried out with the contribution of the





Arrival at the facility

Private/public parking

| | |
|--|---|
| Presence of private parking | NO |
| Presence of parking space reserved for people with disabilities | YES in the public car park |
| Type of parking surface | ASPHALT |
| Public parking nearby | YES |
|  |  |

Pathway from the parking lot to the main entrance

| | |
|---|---|
| Pathway from the car park to the entrance | by ramp length 100 cm, width greater than 100 cm, slope 10% |
| There are markers and tactile maps | NO |
| Usable door/entrance width | more than 90 cm |





Reception

| | |
|--|---|
| Umbrella booking system | <input type="checkbox"/> Via web <input checked="" type="checkbox"/> By phone <input checked="" type="checkbox"/> On-site |
| Presence of multilingual staff | YES |
| Presence of plant plan with key to services available | NO |
| Presence of visuo-tactile map | NO |
| Bulletin board/information panels at an average height of 130 cm in a well-lit area and font size at least 14 dpi with a contrast ratio greater than 4.5:1 | NO |
| The staff attended training courses on welcoming people with different disabilities | NO |

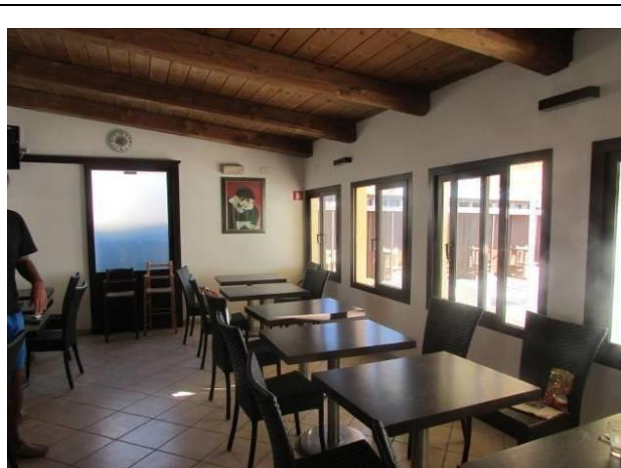
Bar/restaurant

| | |
|------------------------|-----------|
| Type of venue | Snack bar |
| Access to the premises | Flat |





| | |
|--|---|
| Usable door/entrance width | more than 90 cm |
| Bar counter | height greater than 100 cm |
| Types of tables | with central support |
| Space underneath the tables from the floor | 68 cm |
| Multilingual menu | YES |
| Menus with large print fonts | NO |
| Braille menu | NO |
| Table service for people with disabilities | YES |
| Availability of gluten-free food | <input type="checkbox"/> bread <input type="checkbox"/> pasta <input type="checkbox"/> biscuits <input checked="" type="checkbox"/> ice cream <input checked="" type="checkbox"/> Pre-packaged foods |



Internal Pathways and common services

Internal Pathways

| | |
|--|--|
| Indicate whether the pathways connecting the entrance to the beach are flat or with ramps in addition to those already described | flat paths with a ramp 100 cm long and 100 cm wide with a slope of 7 % |
|--|--|





Toilet and shower accessible to guests with reduced mobility

| | |
|--|--|
| Number of toilets accessible/usable by guests with reduced mobility | 1 |
| Access to the premises | Flat |
| Usable width of the entrance door | 89 cm |
| Toilet height | 50 cm |
| Open front toilet seat | YES |
| Support handles | To the right of the toilet |
| Flexible hand shower at the side of the toilet | YES |
| Free space on the sides of the toilet | left more than 90 cm right 36 cm frontal more than 90 cm |
| Electric doorbell/phone | YES |
| Washbasin with space underneath for wheelchair | more than 70 cm |
| Height from the ground on the bottom edge of the mirror | missing |
| Baby changing table | Not detected |






| | |
|---|--|
|  |  |
| <p>Accessible shower available for guests with reduced mobility</p> | <p>SI separated from the toilet room</p> |
| <p>Shower type</p> | <p>Gap cm 80</p> |
| <p>Floor-level shower</p> | <p>NO with cm wide threshold and 0.5 cm high step</p> |
| <p>Shower chair</p> | <p>plastic with armrests</p> |
| <p>Grab bar</p> | <p>NO</p> |
| <p>Presence of shower head or ups and downs</p> | <p>Sliding rails with lowest point height 140 cm</p> |
| <p>Electric doorbell/phone</p> | <p>NO</p> |
|  | |



Changing room

| | |
|---|---|
| Accessible changing room available for guests with reduced mobility | YES |
| Access to the premises | Flat |
| Usable door/entrance width | 80 cm |
| Size of the dressing room | width 150 cm and depth 150 cm |
| Presence of a cot | NO |
| Coat rack height from the ground | less than 140 cm and can be used by people in wheelchairs |
| Changing | YES |
|  | |






Project promoted by



Regione Toscana

Beach

| | |
|---|---|
| Type of beach | sand |
| Access to the beach | Flat |
| Walkway to reach the umbrellas | YES |
| Type of walkway | PVC |
| Walkway width | 100 cm |
|  |  |
|  | |

Project carried out with the contribution of the




Presidenza del
Consiglio dei Ministri
Ministro per la disabilità



| | |
|--|-----|
| Removable Platform between the walkway and the umbrella station to facilitate the passage and parking wheelchair | YES |
| Amphibious beach chair available for helping people with reduced mobility to enjoy swimming (owned by the establishment or by association) | YES |

Children's play area

| | |
|---|--|
| Children's play area | inaccessible to children with reduced mobility due to sandy bottom |
| There are games for children with reduced mobility | NO |
| Playgrounds | Beach volleyball |
|  | |

Swimming pool

| | |
|----------------------------------|----|
| The property has a swimming pool | NO |
|----------------------------------|----|

Project promoted by



Regione Toscana

Doctors' Offices/Healthcare Facilities

| | |
|-----------------------------|--|
| Hospitals near the facility | Misericordia Grosseto Hospital 10 km |
| Other Healthcare Facilities | Distretto Socio Sanitario via Don Giovanni Minzoni, 5, 58100 Grosseto tel. 0564 485111 approx. 10 km Dialysis Service on Holiday at Ospedale Misericordia Grosseto U.O. Nephrology and Dialysis Tel. 0564 485.218 |

TESTED BY: **Handy Superabile Social Promotion Association** in summer 2023

Project carried out with the contribution of the



Presidenza del
Consiglio dei Ministri
Ministro per la disabilità